


DATA SHEET

PS 1500 N+ Thermal Store

	Main Features	
	Application	Storage and subsequent distribution of thermal energy from solid-fuel boilers, heat pumps or other heat sources
	Working fluid	water, water-glycol mixture (max. 1:1), water-glycerine mixture (max. 2:1), thermal oil
	Storage tank code	15153
	Insulation code	19303

Energy Efficiency Data (as per EC Regulation No. 812/2013)

	valid for a tank with insulation
Energy efficiency class	N/A
Static loss	168 W
Storage volume	1504 l

Technical data

Total storage tank volume	1504 l
Max. working temperature in storage tank	95 °C
Max. working pressure in storage tank	3 bar
Storage tank diameter	1100 mm
Storage tank diameter with insulation	1300 mm
Storage tank overall height	1885 mm
Tipping height without insulation	1965 mm
Storage tank perimeter insulation thickness	100 mm
Storage tank bottom insulation thickness	50 mm
Storage tank top insulation thickness	100 mm
Empty weight without insulation	176 kg

Materials

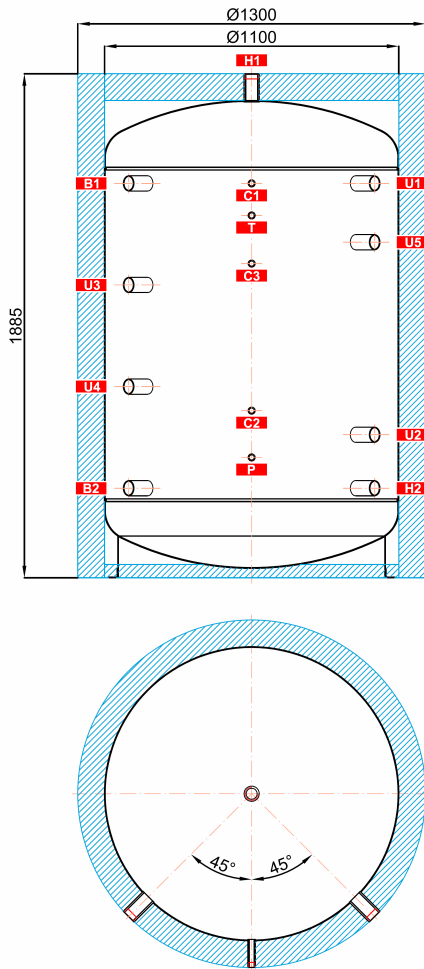
Storage tank material	S235JR
Storage tank perimeter insulation	fleece
Storage tank outer surface insulation	hard polystyrene
Top and bottom storage tank insulation	fleece

Accessories

Electrical heating element	ETT-A, C, D, F, P, M
Heating element max. length	955 mm

PS 1500 N+ Thermal Store

Dimensions



TAPPINGS

pos.	description	connection	height [mm]
Heat sources			
B1	Supply from heat source	G 6/4" F	1475
B2	Return to heat source	G 6/4" F	335
Heating system			
H1	Supply to heat sink	G 6/4" F	1885
H2	Return from heat sink	G 6/4" F	335
Control and safety			
C1	Temperature sensor	G 1/2" F	1475
C2	Temperature sensor	G 1/2" F	625
C3	Temperature sensor	G 1/2" F	1175
T	Thermometer	G 1/2" F	1355
P	Safety valve	G 1/2" F	450
Universal inlet/outlet			
U1	Universal inlet/outlet	G 6/4" F	1475
U2	Universal inlet/outlet	G 6/4" F	535
U3	Universal inlet/outlet	G 6/4" F	1095
U4	Universal inlet/outlet	G 6/4" F	715
U5	Universal inlet/outlet	G 6/4" F	1255