


DATA SHEET
PS 500 N+ Thermal Store

	Main Features	
	Application	Storage and subsequent distribution of thermal energy from solid-fuel boilers, heat pumps or other heat sources
	Working fluid	water, water-glycol mixture (max. 1:1), water-glycerine mixture (max. 2:1), thermal oil
	Storage tank code	14723
	Insulation code	19296

Energy Efficiency Data (as per EC Regulation No. 812/2013)

	valid for a tank with insulation
Energy efficiency class	C
Static loss	93 W
Storage volume	474 l

Technical data

Total storage tank volume	474 l
Max. working temperature in storage tank	95 °C
Max. working pressure in storage tank	4 bar
Storage tank diameter	600 mm
Storage tank diameter with insulation	800 mm
Storage tank overall height	1915 mm
Tipping height without insulation	1940 mm
Storage tank perimeter insulation thickness	100 mm
Storage tank bottom insulation thickness	50 mm
Storage tank top insulation thickness	100 mm
Empty weight without insulation	72 kg

Materials

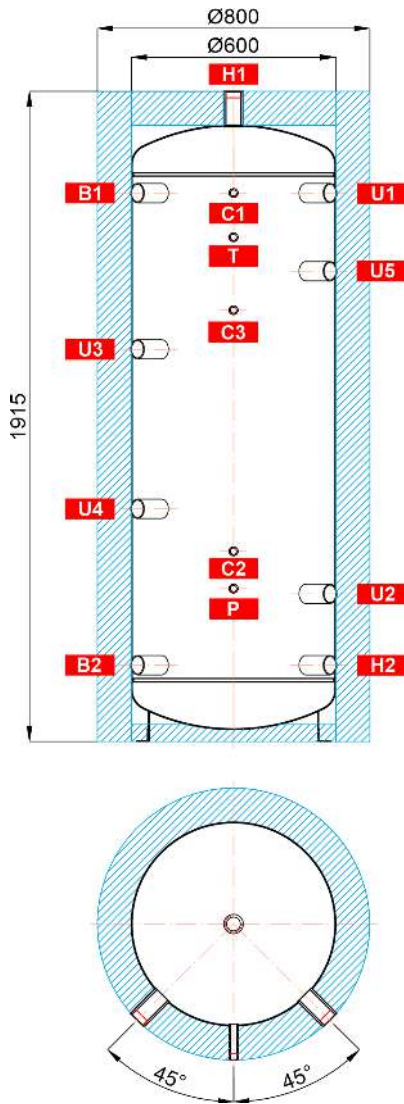
Storage tank material	S235JR
Storage tank perimeter insulation	fleece
Storage tank outer surface insulation	hard polystyrene
Top and bottom storage tank insulation	fleece

Accessories

Electrical heating element	ETT-A, C, D, F, P, M
Heating element max. length	680 mm

PS 500 N+ Thermal Store

Dimensions



TAPPINGS

pos.	description	connection	height [mm]
------	-------------	------------	-------------

Heat sources

B1	Supply from heat source	G 6/4" F	1615
B2	Return to heat source	G 6/4" F	225

Heating system

H1	Supply to heat sink	G 6/4" F	1915
H2	Return from heat sink	G 6/4" F	225

Control and safety

C1	Temperature sensor	G 1/2" F	1615
C2	Temperature sensor	G 1/2" F	560
C3	Temperature sensor	G 1/2" F	1270
T	Thermometer	G 1/2" F	1485
P	Safety valve	G 1/2" F	450

Universal inlet/outlet

U1	Universal inlet/outlet	G 6/4" F	1615
U2	Universal inlet/outlet	G 6/4" F	435
U3	Universal inlet/outlet	G 6/4" F	1155
U4	Universal inlet/outlet	G 6/4" F	685
U5	Universal inlet/outlet	G 6/4" F	1385